

Guidance on using the SLD Digital Map (SLD WR Appendix Z):

1. Open through your desktop PDF viewer

such as Adobe. Viewing it through your browser can cause difficulties.

2. Open the layers panel

Look at the vertical tab on the far right side of your screen. Click the layers icon (which

appears like two stacked diamonds). This will slide open a panel listing the layers of information. (see attached image of the map layers menu for reference).

3. Turn information on and off

Next to each layer name, you will see a box. The layers which are already applied will

have an eye icon in them. To show a layer click the empty box. To hide a layer click the eye icon in the box.

4. Tips for best results

- Always keep the two “Base-OS Map” layers on so that you can see the underlying map.

- If visibility is difficult select “Optional – Background Tint”. This will apply a white

tint in the layers which helps with visibility (by partially obscuring the OS map behind).

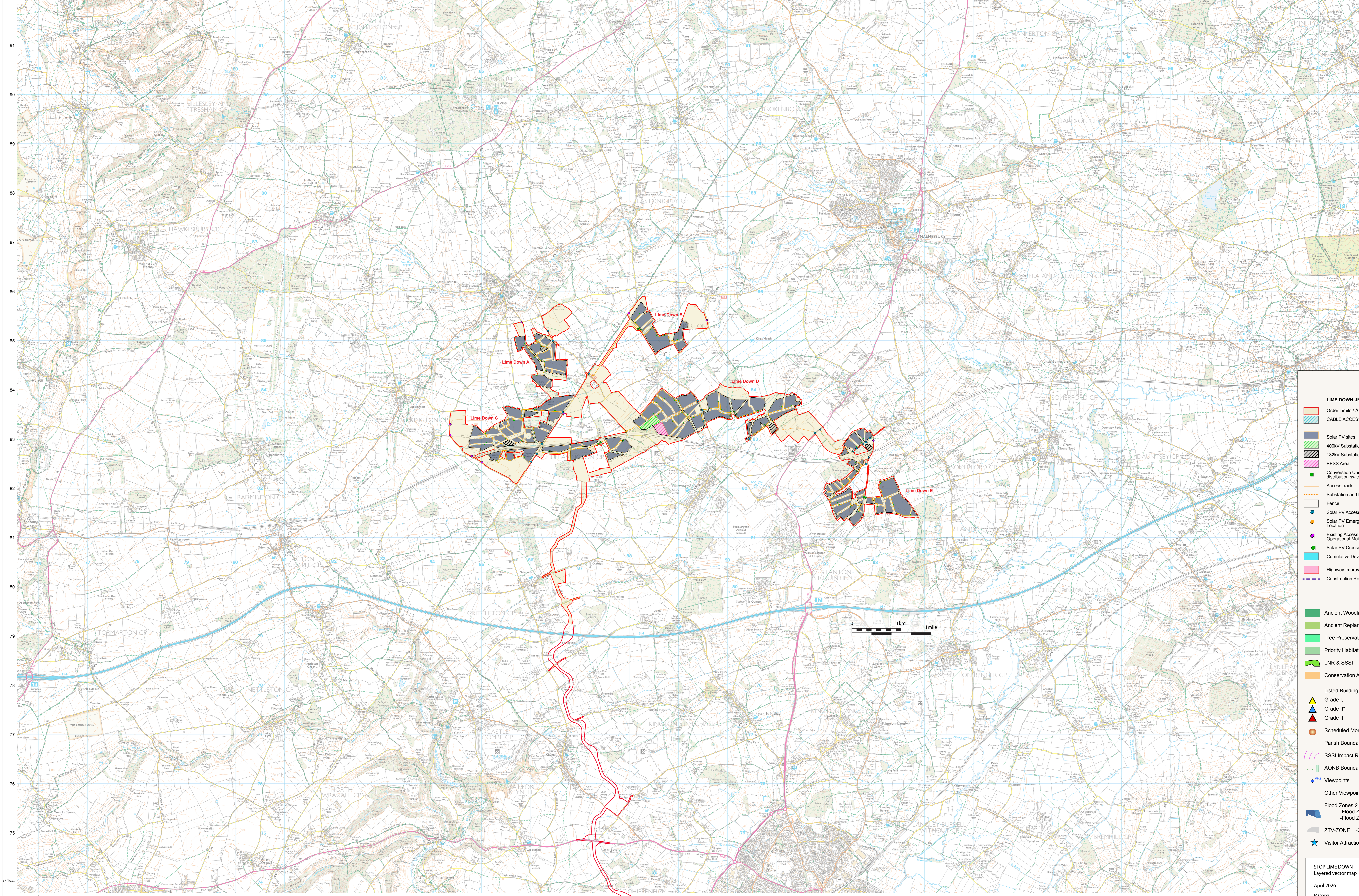
- The layers stack is long, so use the scroll wheel on your mouse to navigate.

The layer groups are as follows:

- Base – the base mapping. Typically should be left on at all times.
- Optional – useful information which is not specifically tied to an

Print what you see: when you print a PDF, Acrobat will only print the current layers you see. If you wish to save a view, you can print (or print to PDF to have an electronic copy).

Save your view: if you find a specific combination of layers you like, you can save the map PDF and it will usually remember them the next time you open it.



LIME DOWN -INFRASTRUCTURE

- Order Limits / Areas A-E - Tint
- CABLE ACCESS - Cable Route Corridor
- Solar PV sites
- 400V Substations
- 132kV Substations
- BES Areas
- Conversion Unit 132kV sub distribution switch room
- Access track
- Substation and Bess Access Track
- Fence
- Solar PV Access Location
- Solar PV Emergency Access Location
- Existing Access for Operational Maintenance
- Solar PV Crossing Location
- Cumulative Development Site
- Highway Improvement Areas
- Construction Routes
- Ancient Woodland
- Ancient Replanted Woodland
- Tree Preservation Orders
- Priority Habitat Wood Pasture & Parkland
- LNR & SSSI
- Conservation Areas
- Listed Building and Structures:
 - Grade I
 - Grade II*
 - Grade II
- Scheduled Monuments
- Parish Boundaries
- SSSI Impact Risk Zones
- AONB Boundary
- Viewpoints
- Other Viewpoint
- Flood Zones 2 & 3 (Vector) illustrative
 - Flood Zone 3
 - Flood Zone 2
- ZTV-ZONE - Grey png -70%
- Visitor Attractions

STOP LIME DOWN
Layered vector map
April 2026
Mapping © Ordnance Survey Crown Copyright 2026.
Licence Number 100019890

